



Mapping Highlights of the Independent Grantmaking Organizations for Social Justice and Community Development in Brazil

KEYFACTS

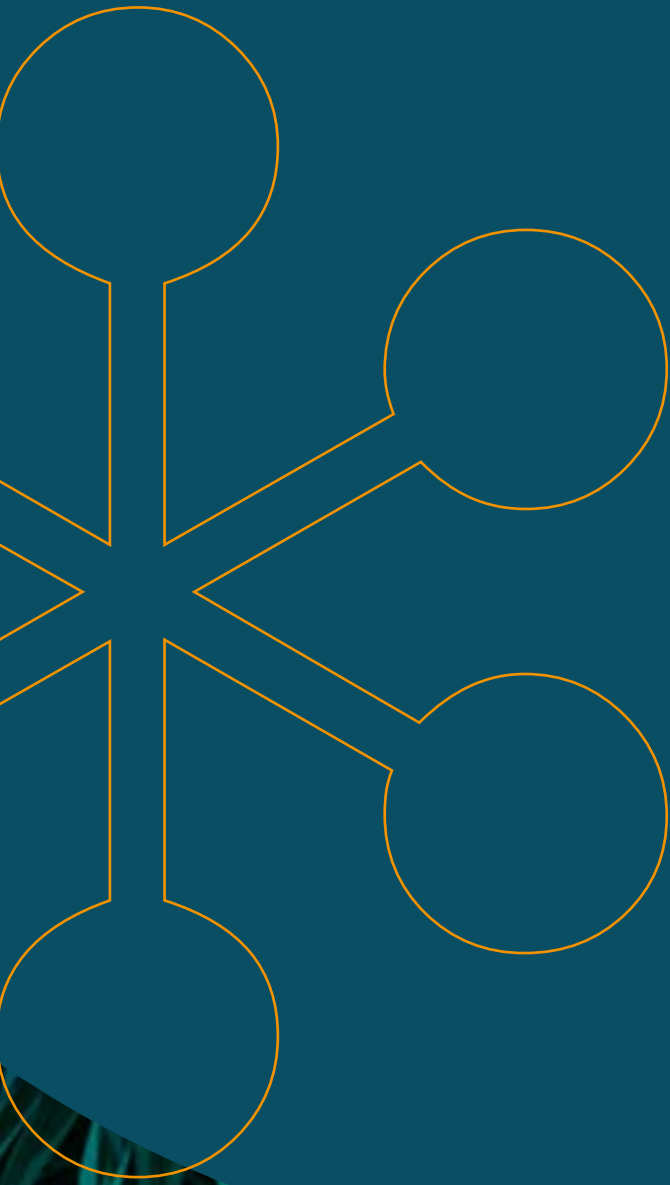


Table of Contents

| | |
|---|----|
| Introduction | 4 |
| Funding sources and Governance | 12 |
| Grantmaking Focus | 16 |
| Forms of Grantmaking | 22 |
| Strengthening and Recognizing Leaders, Communities and Organizations | 28 |
| Articulating and Strengthening the Field | 34 |

INTRODUCTION

WHAT IS THE MAPPING OF INDEPENDENT GRANTMAKING ORGANIZATIONS FOR SOCIAL JUSTICE AND COMMUNITY DEVELOPMENT IN BRAZIL?

The Brazilian Philanthropy Network for Social Justice (*Rede de Filantropia para a Justiça Social – RFJS*) and ponteAponTE partnered to conduct the mapping. It is a study developed from qualitative (interviews) and quantitative (questionnaires) approaches to understand, characterize, and highlight the independent organizations that have donated funds to social justice and community development organizations, groups, and civil society movements in Brazil. The research was conducted from January to August 2022.

The organizations donate with the mindset that those receiving the funds should run development. Instead of a top-down approach, those organizations believe that resource mobilization and decision-making power must be on the hands of their grantees, as the former are the ones with control over their own destiny.

The organizations in this mapping are characterized by their independence in resource management, donation themes and forms of action.

Independent action, a hallmark of organizations with this profile, establishes that funders do not interfere in the destination of resources. When that happens, participation should be equal with other actors and under the receiving organization's governance structure.

Acting for social justice is committing to mobilize resources

to human, civil, social, economic and cultural rights agendas. The mapped sample showed organizations that work to develop a specific community by connecting the territorial focus with social justice agendas.

Mobilizing financial resources from different sources and making direct donations are requirements to limit the scope or universe of this mapping. Nevertheless, indirect donations, joint or collective design of calls for proposals, and continuous communication also define how this group of organizations operates.

The mapped organizations contribute to agendas such as racial equity, indigenous and traditional communities, gender, sexuality, and the environment (to name a few) to meet the needs of populations who historically have their rights denied.

WHAT METHODOLOGY WAS USED?

31 Organizations were mapped using the snowball sampling method or by browsing for organizations on specialized and news sites.

The snowball sampling method is a sampling technique that uses reference networks and referrals. The Brazilian Network referred the first organizations for the mapping. These then referred other similar organizations. That pattern was followed until all referrals for the mapping were exhausted.

Data was collected using questionnaires, secondary data research and semi-structured interviews



The study results are not exhaustive, nor do they represent the entire field, as there is no consolidated portfolio of every organization operating in Brazil that meets the criteria. The snowball sampling method relies on the mapped actors' networks, so smaller organizations and those distant from those connections may have been left out of this mapping.

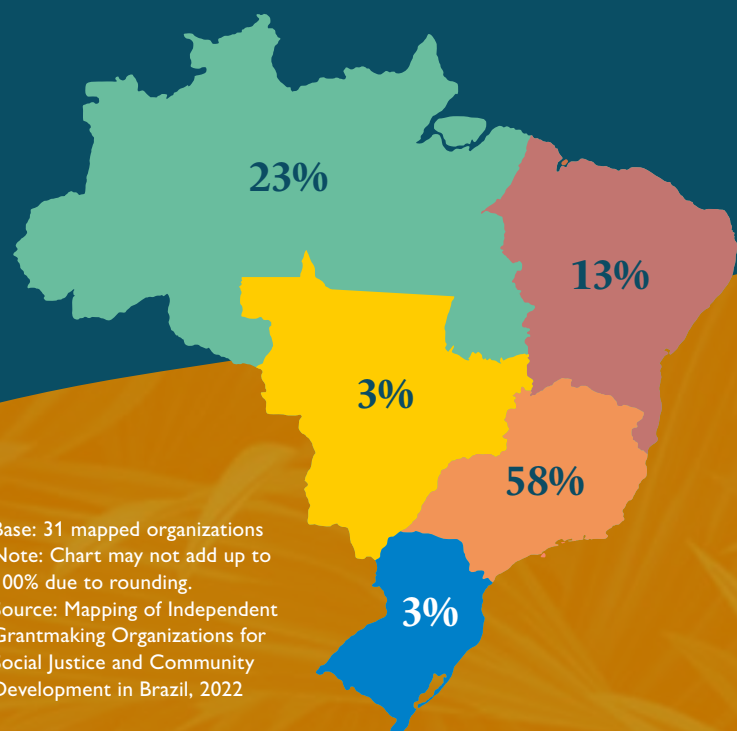
Although limited, the 31 organizations were mapped as the result of an attempt to reach the maximum number of referrals as well as regional diversity. 14 out of the 31 organizations are part of the Brazilian Network, and 17 have been mapped. There is a complete list at the end of this report.

WHERE ARE THE MAPPED ORGANIZATIONS?

The 31 mapped organizations are in 10 Brazilian states and the Federal District and represent all of Brazil's regions

Mapped organizations by Region

29% of the organizations are headquartered in São Paulo—the state with the highest concentration. While 23% are in Rio de Janeiro, Amazonas and Pará are each home to 10% of the mapped organizations. The other states represented are Amapá, Bahia, Espírito Santo, Maranhão, Minas Gerais, Santa Catarina, and Distrito Federal.

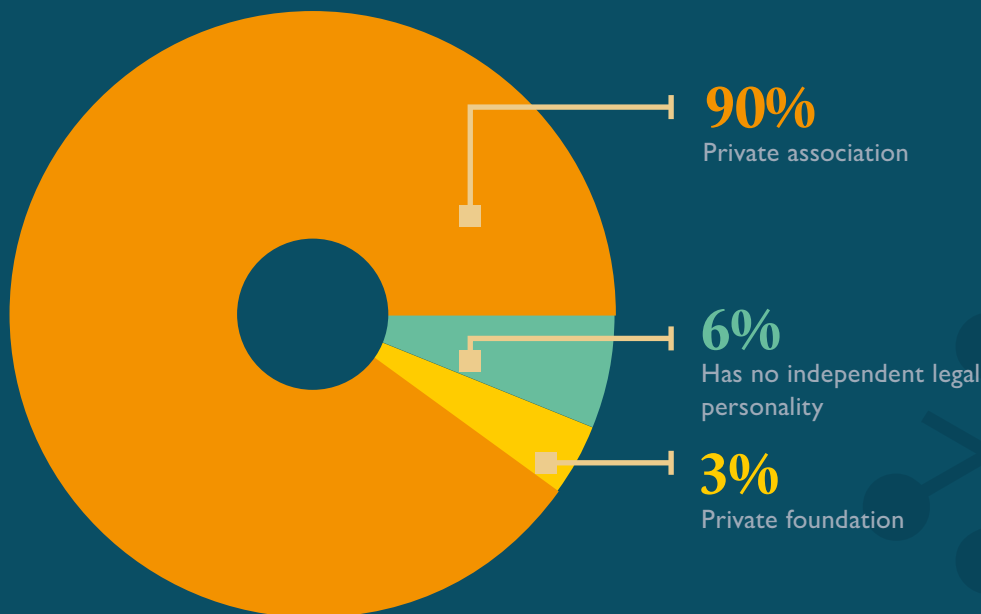


WHAT TYPES OF ORGANIZATIONS ARE WORKING IN THE FIELD?

29 organizations are registered with their own CNPJ

Organizations without their own Brazilian Corporate Taxpayer ID Number (CNPJ), 6% of those mapped, were constituted as funds within the structure of a sustaining or parent organization. That parent/sustaining organization is fiscally responsible and institutionally contributes to maintaining the other organization, keeping them independent with their own governance.

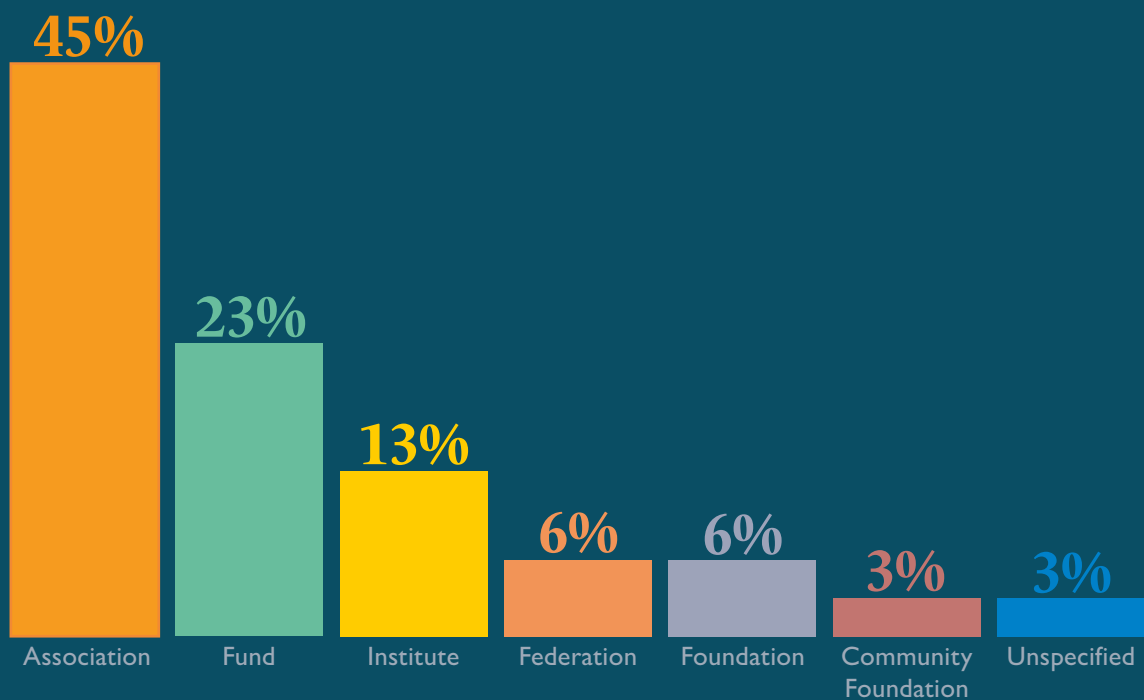
Mapped organizations per type of legal entity



Base: 31 mapped organizations
Note: Chart may not add up to 100% due to rounding.
Source: Mapping of Independent Grantmaking Organizations for Social Justice and Community Development in Brazil, 2022

In addition to legal formalization, these grantmaking organizations were asked how they typify themselves within the ecosystem of civil society organizations (CSOs).

Mapped organizations on their typification



Base: 31 mapped organizations

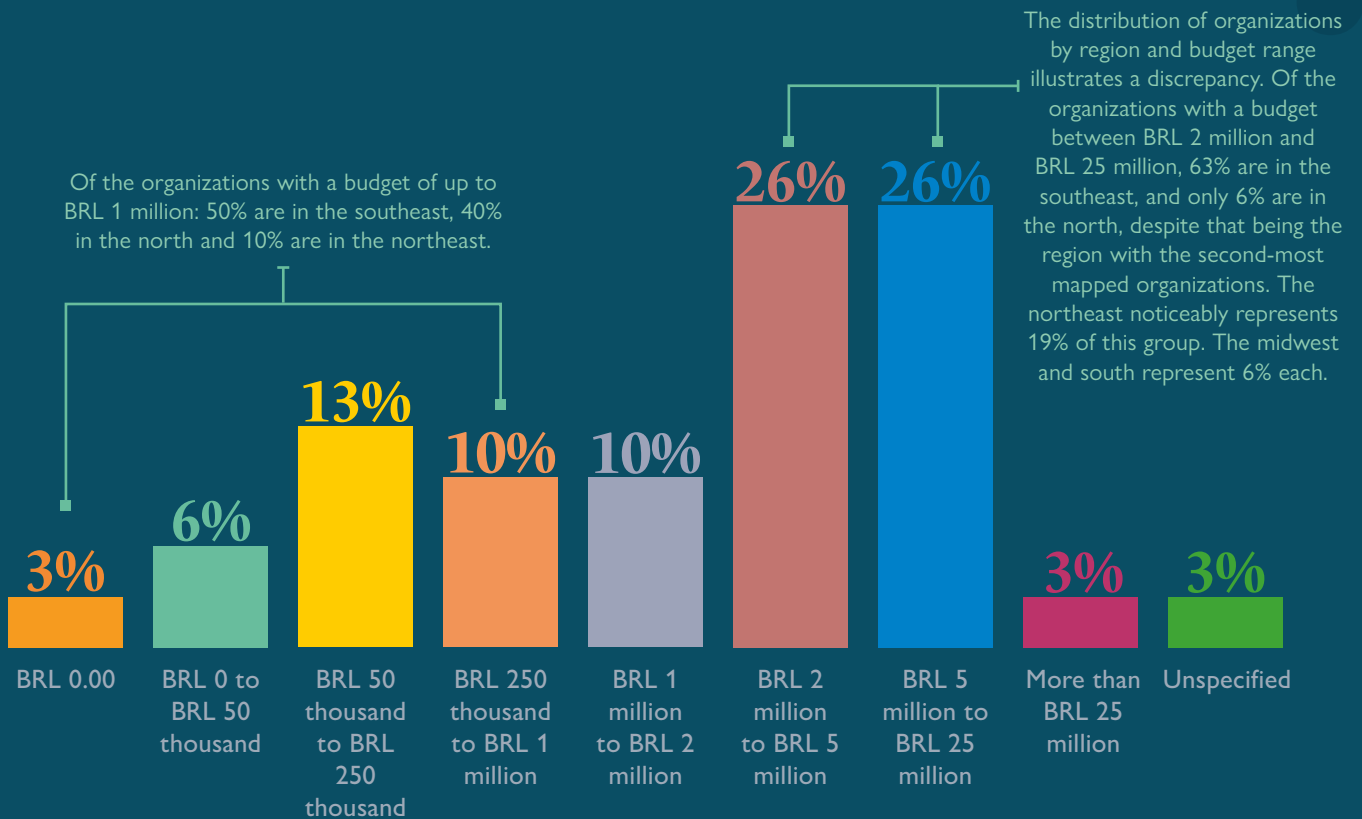
Note: Chart may not add up to 100% due to rounding.

Source: Mapping of Independent Grantmaking Organizations for Social Justice and Community Development in Brazil, 2022

WHAT BUDGET DID THE ORGANIZATIONS HAVE IN 2021?

The distribution of organizations mapped by budget is an indicator of the sample's diversity. 52% of the mapped organizations have budgets between BRL 2 million and BRL 25 million. 32% of them have a budget of less than BRL 1 million.

Mapped organizations by budget in 2021 (in ranges)



Base: 31 mapped organizations
 Note: Chart may not add up to 100% due to rounding.
 Source: Mapping of Independent Grantmaking Organizations for Social Justice and Community Development in Brazil, 2022





FUNDING SOURCES AND GOVERNANCE

WHAT ARE THE MAPPED ORGANIZATIONS' FUNDING SOURCES?

Most donations come from
international philanthropy
organizations,

although Brazilian philanthropic organizations
and other national sources also play a relevant role.

Mapped organizations by funding sources



Base: 30 mapped organizations

Note: Each mapped organization responded to more than 1 option.

The percentages represent the total responses for each option.

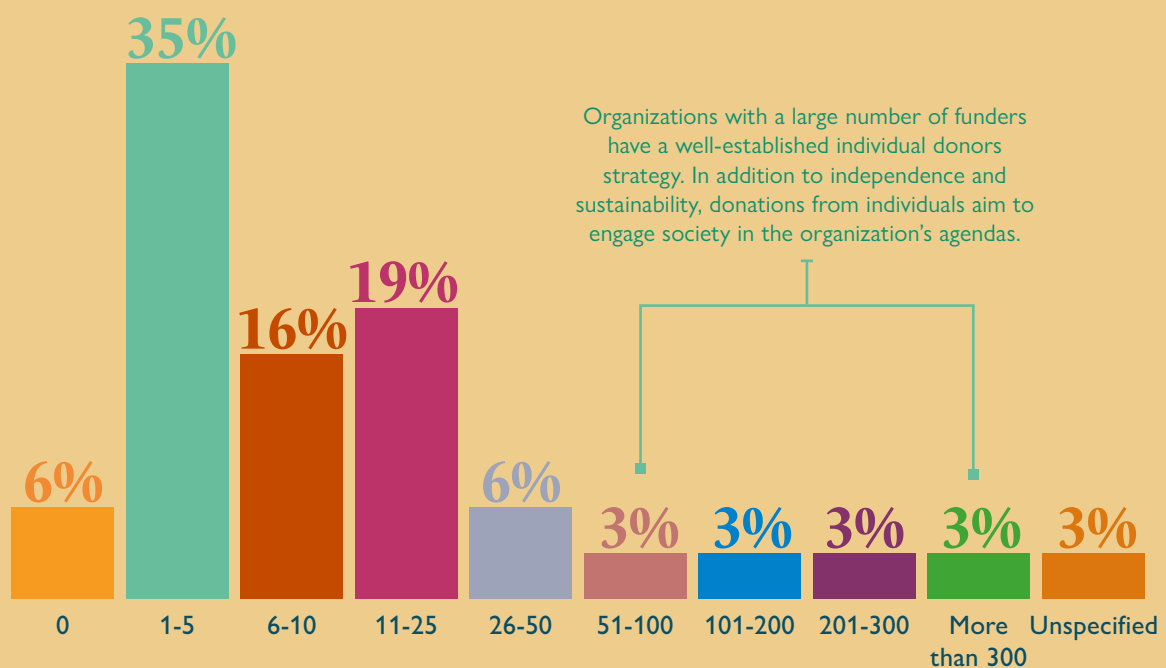
Source: Mapping of Independent Grantmaking Organizations for

Social Justice and Community Development in Brazil, 2022

WHAT IS THE TOTAL NUMBER OF MAPPED ORGANIZATIONS' FUNDERS?

The mapped organizations purposely diversify their funding sources to not depend on a specific organization or individual and, thus, secure permanently sustained development of their activities.

Mapped organizations by number of funders in 2021



Base: 31 mapped organizations

Note: Chart may not add up to 100% due to rounding.

Source: Mapping of Independent Grantmaking Organizations for Social Justice and Community Development in Brazil, 2022

The mapped organizations cited 89 different funders for the question, “Who are the organization’s main funders?”

Although the mapped organizations often cited national organizations and companies as funders, international organizations are still the predominant.

HOW DO ORGANIZATIONS SECURE INDEPENDENCE FROM FUNDERS?

68% *of the mapped organizations declared that funders have no influence over the use of funds, decisions or governance*

The other 32% of the mapped organizations said that funders have some form of influence over the funding and activities. Funders have four ways to participate: equal participation in the organization's board of trustees (60%), participation in initiatives designed for funders to have greater civic engagement (20%), participation in constructing the funded project (10%), and participation in the supported project's governance (10%).

The participation in boards of trustees happen in two types of organizations: 1) organizations that mobilize donations from individuals, and donor participation in these spaces improves engagement and collective construction; 2) organizations proposing to build coordinated governance between civil society, public authorities and the private sector.

Even though some organizations said there is no influence from funders, it should be noted that the relationship with funders includes formal accountability procedures. The mapped organizations also intend to have dialogue and exchange experiences about the efforts with philanthropy funders as part of a dynamic partnership.

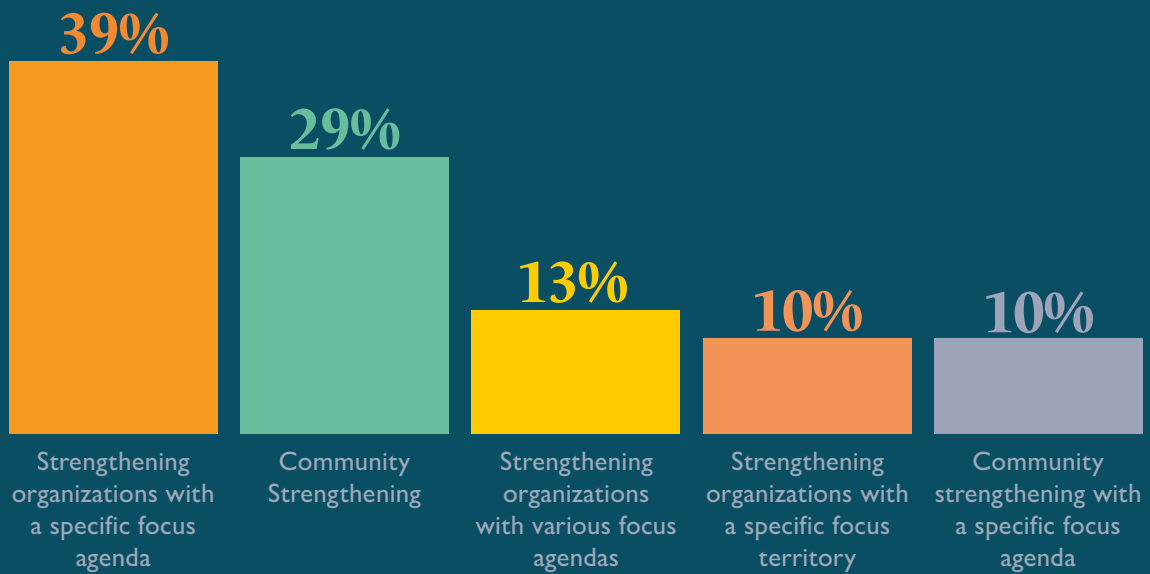
GRANTMAKING FOCUS

WHY DO ORGANIZATIONS DONATE?

Organizations donate mainly to strengthen organizations that act on specific agendas

The mapped organizations were classified as those that donate to strengthen organizations and those that donate to strengthen a community. Some of those aiming to strengthen organizations focus on organizations that work within specific agendas or territories. Likewise, those who donate to develop one or more communities connected to a territory (regions, biomes, city or state) can act in these communities from a specific topic (agenda). Strengthening communities without focusing on specific agendas is the second leading grantmaking motivator (29%).

Mapped organizations per grantmaking motivator



Base: 31 mapped organizations

Note: Chart may not add up to 100% due to rounding.

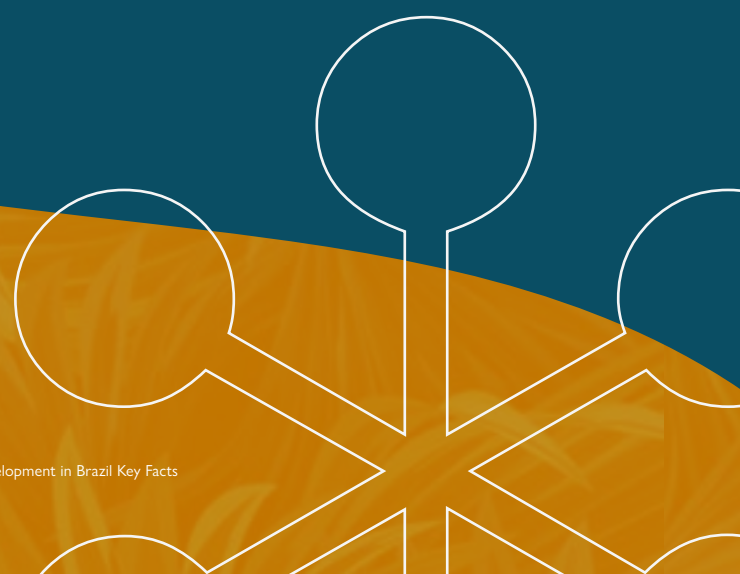
Source: Mapping of Independent Grantmaking Organizations for Social Justice and Community Development in Brazil, 2022



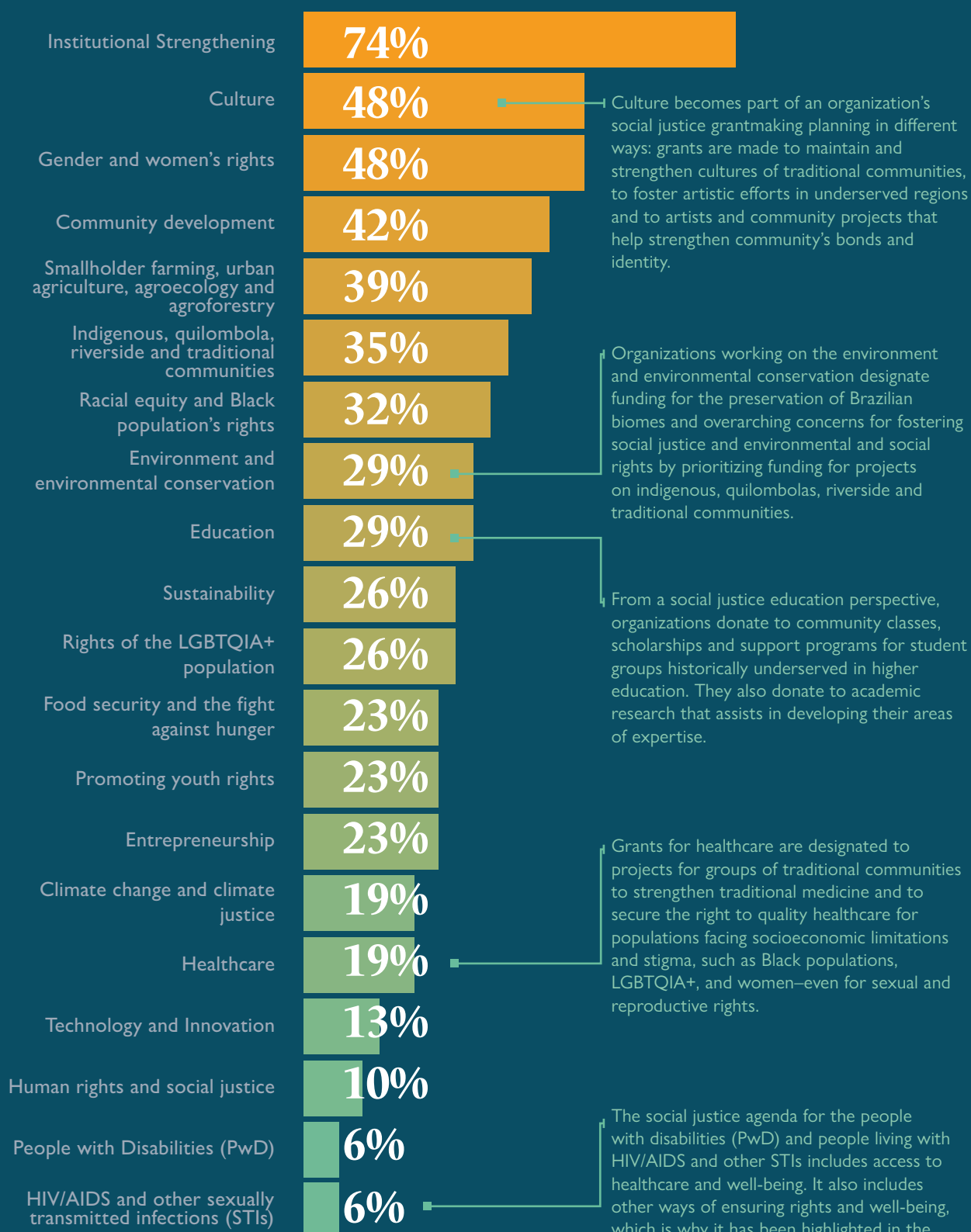
WHAT TOPICS DO ORGANIZATIONS DONATE TO?

Knowing which topics drive organizations to donate is fundamental for categorizing them as independent grantmaking organizations for social justice or community development. The agenda assessment takes into consideration their priority and complementary operational objectives. The commitment to advocacy and organizational and community strengthening is obvious when analyzing which topics motivated the mapped organizations to donate.

Institutional strengthening is the organizations' main agenda (74%), followed by gender and women's rights (48%) and culture (48%). Topics on communities, local development and traditional peoples are also highlighted, such as community development (42%), smallholder farming, urban agriculture, agroecology and agroforestry (39%), and indigenous, quilombolas, riverside and traditional communities (35%)



Mapped organizations per grantmaking agenda



Base: 31 mapped organizations

Note: Each mapped organization responded to more than 1 option.

The percentages represent the total responses for each option.

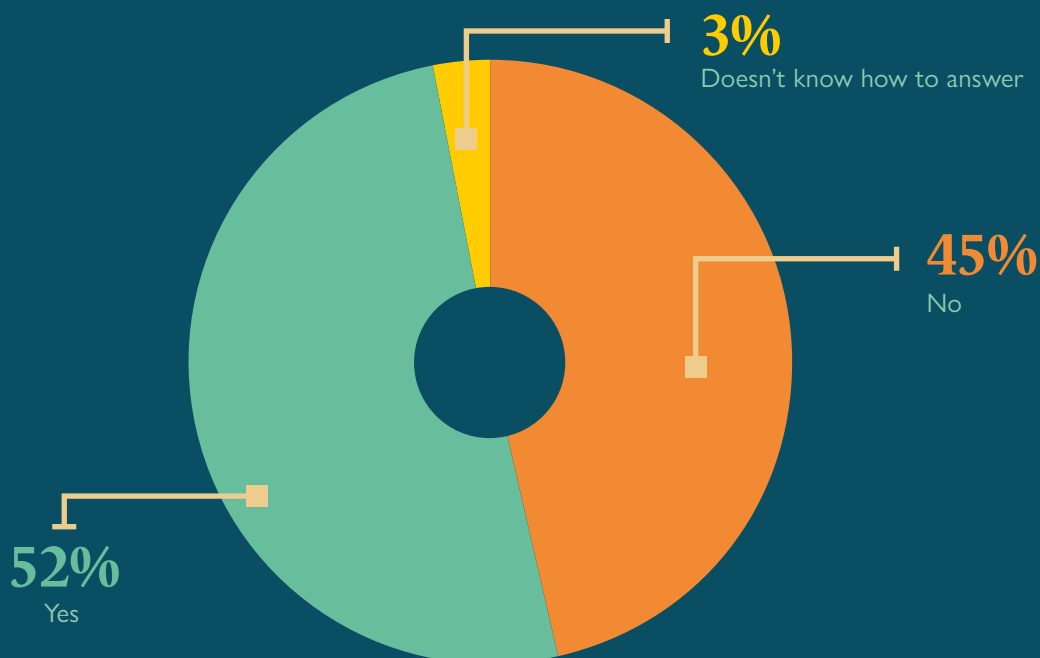
Source: Mapping of Independent Grantmaking Organizations for Social Justice and Community Development in Brazil, 2022

DO ORGANIZATIONS DONATE TO ADVOCACY STRATEGIES?

Grants to organizations and movements that work with advocacy is part of the objectives of 52% of the organizations mapped. Even so, it is noteworthy that even in cases where these grants are not explicitly designated for advocacy, their grantmaking is also a political statement, due to the nature of all mapped organizations' grantmaking strategies and priority audiences.

Advocacy actions are those aimed at identifying, adopting and promoting a cause with the government (in the legislative, executive, or judiciary scope) or via public perception of this cause.

Mapped organizations by grants for advocacy



Base: 31 mapped organizations

Note: Chart may not add up to 100% due to rounding.

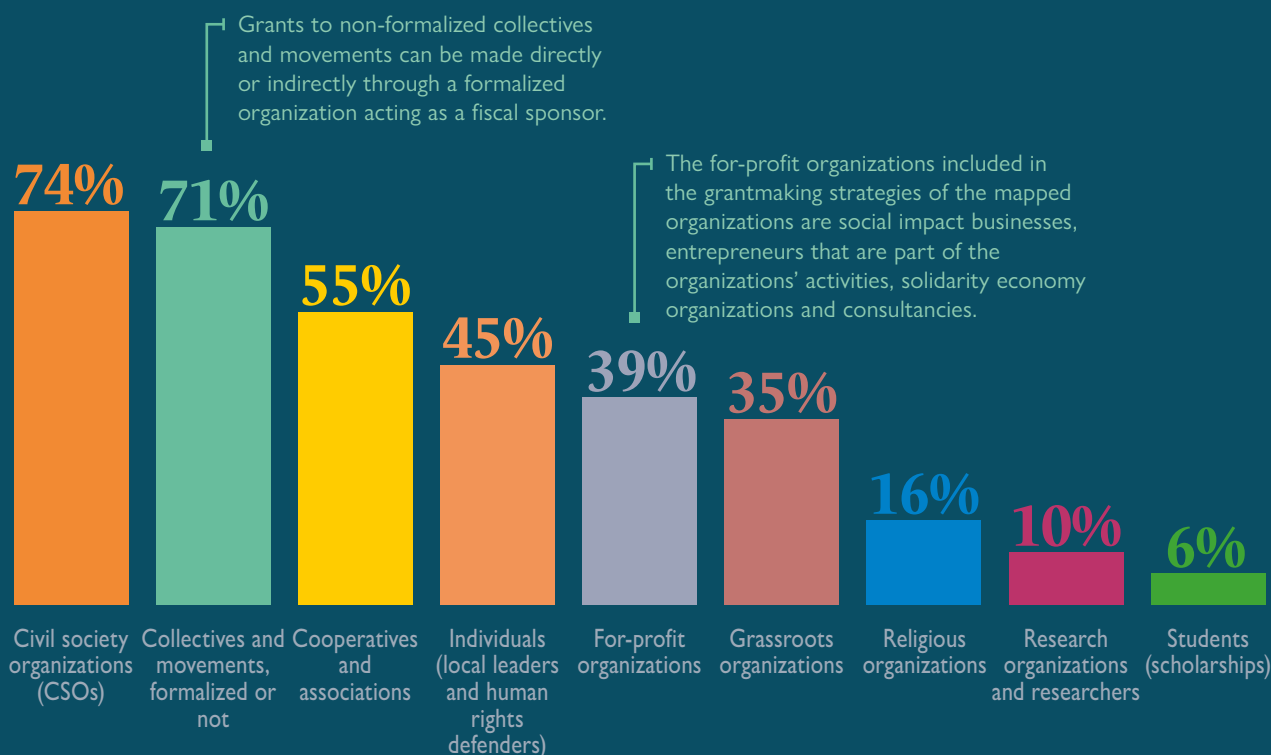
Source: Mapping of Independent-Donor Organizations for Social Justice and Community Development in Brazil, 2022



WHAT AUDIENCES DO ORGANIZATIONS DONATE TO?

Civil society organizations (CSOs) and formalized or non-formalized collectives and movements are the mapped organizations' leading donation audiences

Mapped organizations by grants audience



Base: 31 mapped organizations

Note: Each mapped organization responded to more than 1 option. The percentages represent the total responses for each option.

Source: Mapping of Independent Grantmaking Organizations for Social Justice and Community Development in Brazil, 2022

FORMS OF GRANTMAKING

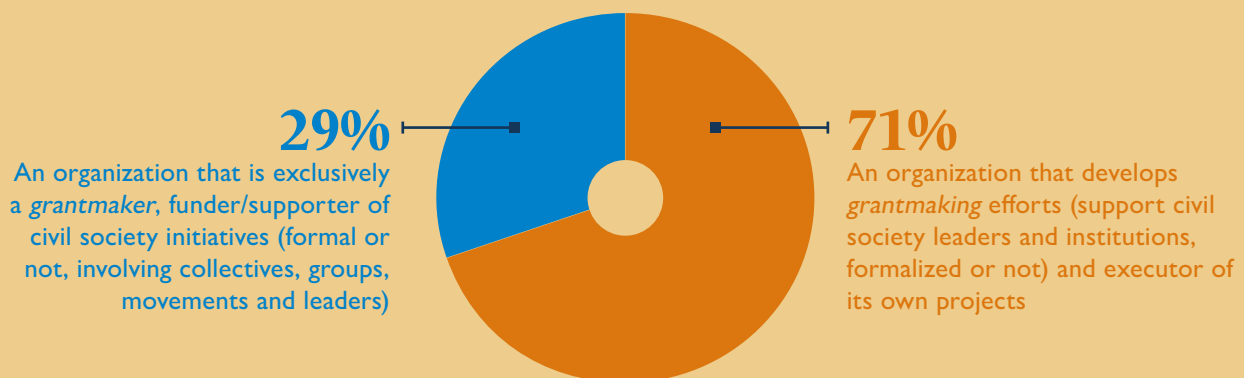
WHAT IS THE OPERATION STRATEGY OF THE ORGANIZATIONS?

71% *of organizations make grants and run their own projects in their fields of action,*

while 29% of the mapped organizations only act as grantmakers by donating funds to organizations and civil society leaders that work with the agenda or community to which they seek to contribute.

Financial donations are essential for categorizing independent grantmaking organizations for social justice or community development and do not prevent them from operating in more than one action strategy.

Mapped organizations per action strategy



Base: 31 mapped organizations

Note: Chart may not add up to 100% due to rounding.

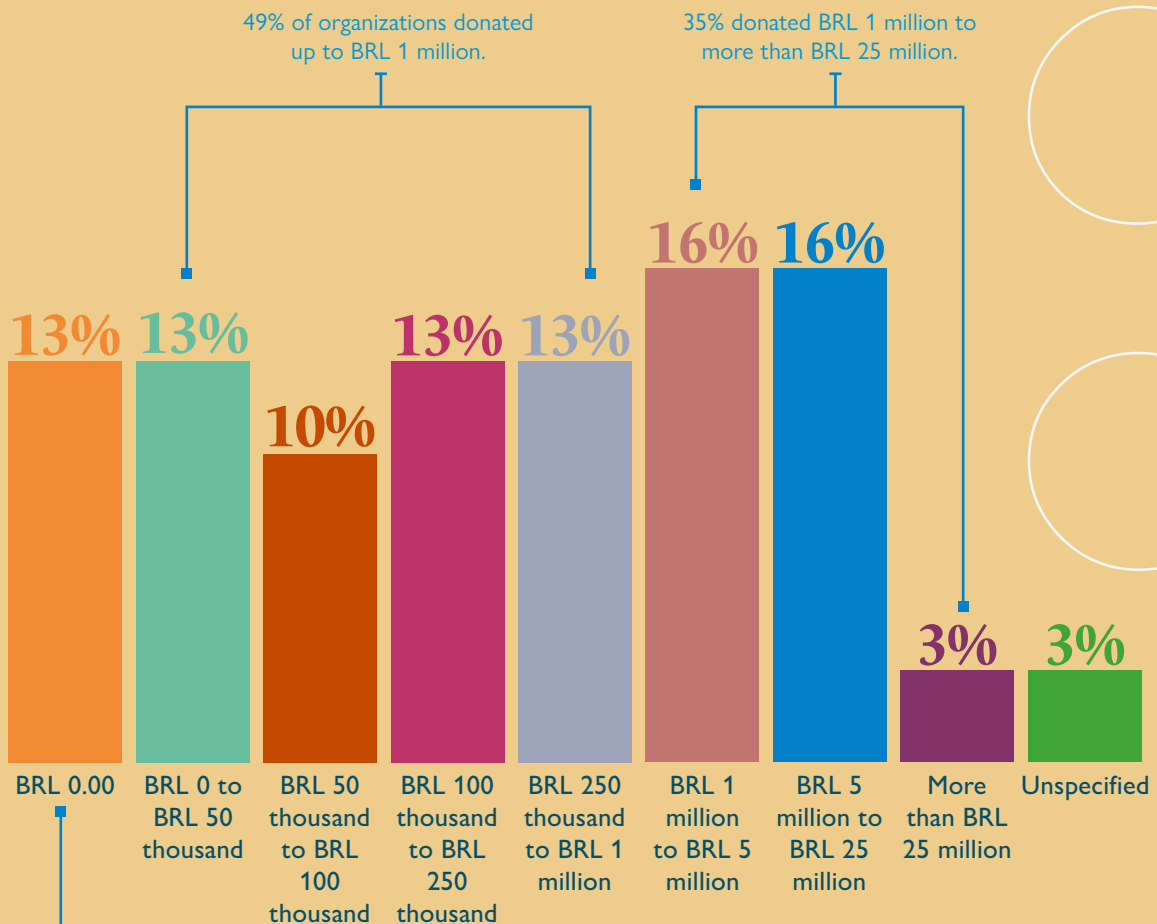
Source: Map of Independent Grantmaking Organizations for Social Justice and Community Development in Brazil, 2022

HOW MUCH FUNDING WAS DONATED IN 2021?

The mapped organizations have a highly diverse grantmaking capacity

The mapped organizations' grantmaking budget for 2021 shows a lot of variation. There were no large concentrations of organizations in specific volume ranges of donated funds.

Mapped organizations by the amount of grants donated in 2021



Some organizations that responded as having donated BRL 0.00 in 2021 only began donating in 2022. Others had donated in previous years and declined to donate in 2021 for reasons set out in their action strategy.

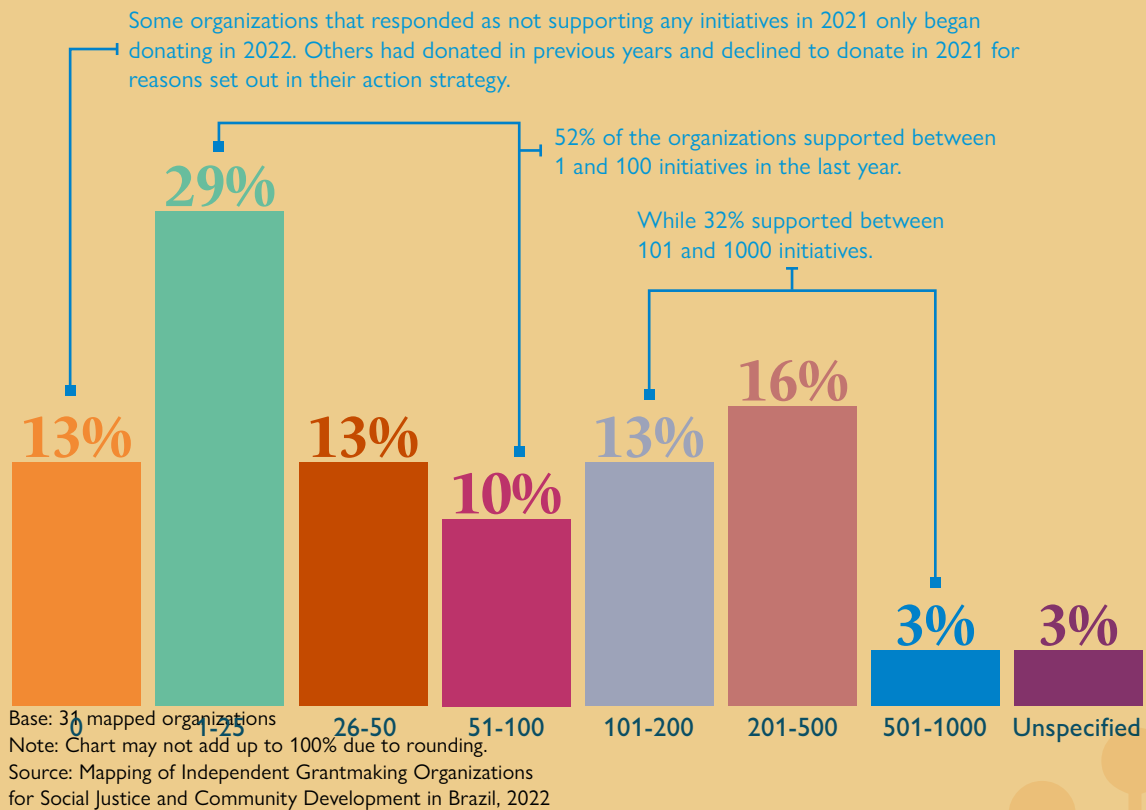
Base: 31 mapped organizations
 Note: Chart may not add up to 100% due to rounding.
 Source: Mapping of Independent Grantmaking Organizations for Social Justice and Community Development in Brazil, 2022

HOW MANY INITIATIVES WERE SUPPORTED?

The number of initiatives that the organizations supported through grants varied significantly. Even so, more organizations can be seen concentrated in the ranges with the lowest number of supported initiatives (1 to 25).

29% of the organizations supported 1 to 25 initiatives

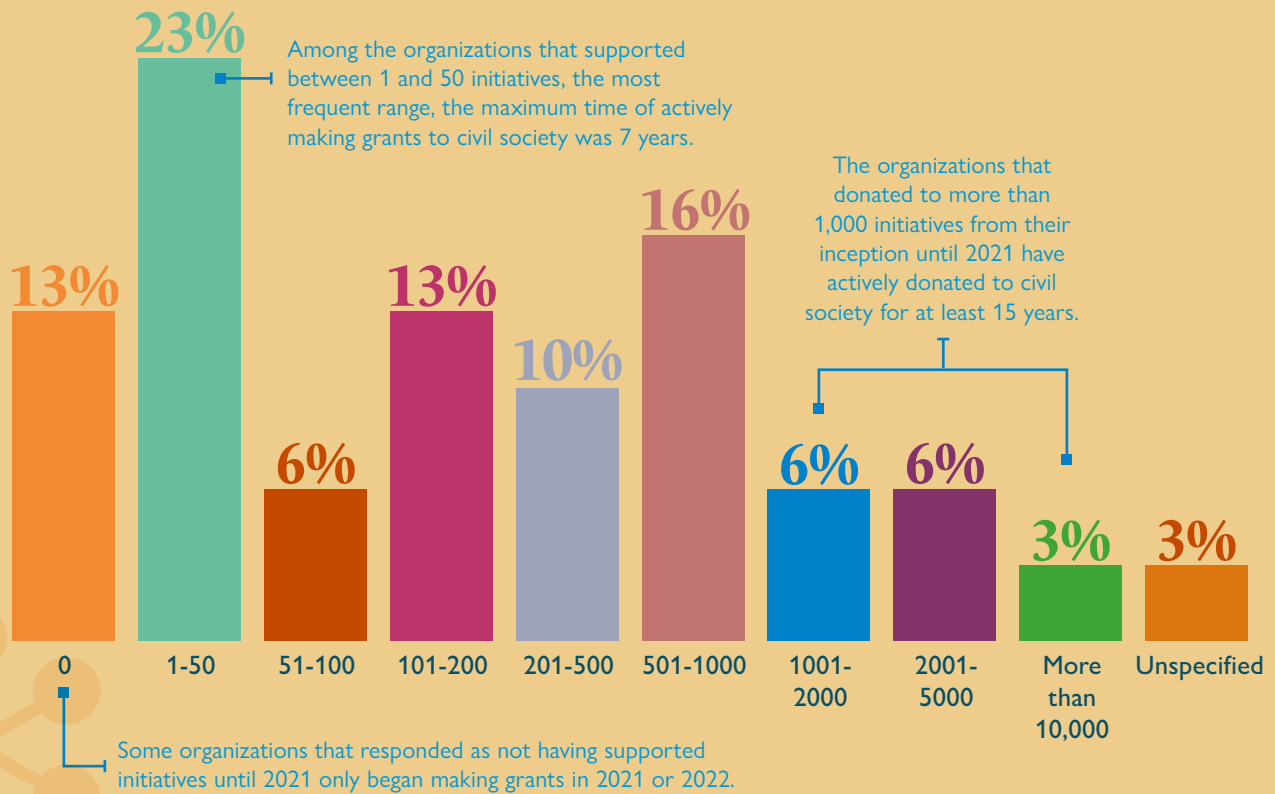
Organizations mapped by number of supported initiatives in 2021



The total number of initiatives the mapped organizations supported throughout their history varied significantly among the sample. The amount of support is directly related to each mapped organization's time in operations. The numbers are also connected with the organizations' concern for providing quality, personalized support whenever possible instead of operating on a large scale.

23% of the organizations supported 1 to 50 initiatives from their inception until 2021

Mapped organizations by the number of initiatives supported from their inception until 2021



Base: 31 mapped organizations
 Note: Chart may not add up to 100% due to rounding.
 Source: Mapping of Independent Grantmaking Organizations for Social Justice and Community Development in Brazil, 2022

BESIDES FINANCIAL DONATIONS, WHAT OTHER FORMS OF SUPPORT ARE MOBILIZED?

All mapped organizations make non-financial donations

Although most of the mapped organizations (74%) emerged with the purpose of making grants, the mapping shows that it is common for organizations to donate more than just funds, either by executing their own projects or donating non-financial resources for the supported leaders, communities and organizations.

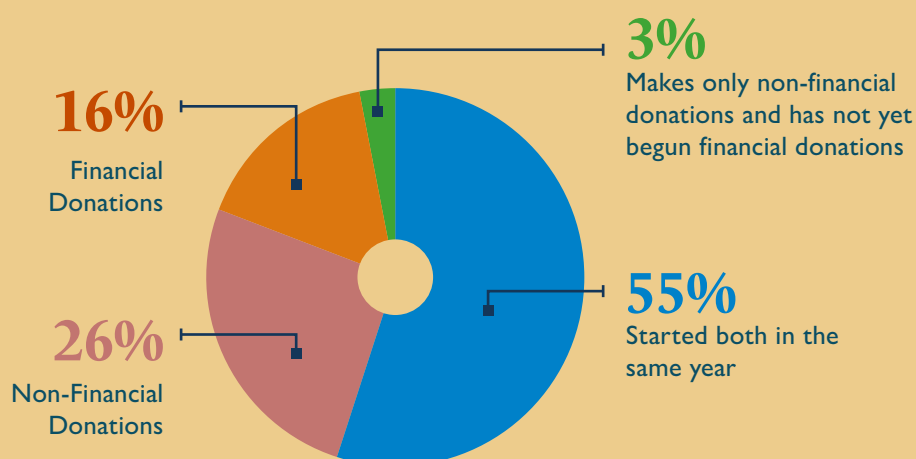
For 26% of the mapped organizations, grantmaking to civil society was not an initial objective for 26% of the mapped organizations. The strategy was introduced in the organization from the notion that its field of action could benefit from or needed to rely on to become stronger

Non-financial donations are ways of transferring indirect resources that prepare supported organizations to receive funds. They could be training/courses on planning, project writing, and accounting practices, to name a few, or could create connection spaces and other actions that institutionally strengthen the supported organizations so that they are able to access funding from other public and private institutions and further develop their activities.

The financial and non-financial support is usually concurrent and secures a closer relationship with the supported leaders, communities and organizations. Non-financial support establishes a collaborative relationship with knowledge sharing and experience exchanges with those supported that does more than the vertical dynamic of donation and accountability.

The fact that 81% of the mapped organizations began operations with this form of support also shows the importance of non-financial support.

Mapped organizations by their initial form of support (financial or non-financial)



Base: 31 mapped organizations

Note: Chart may not add up to 100% due to rounding.

Source: Mapping of Independent-Donor Organizations for Social Justice and Community Development in Brazil, 2022

Financial and non-financial donations thus constitute complementary strategies for mapped organizations' primary objectives: strengthening organizations, collectives, communities and leaders inserted in the territories and agendas of action defined as priorities.

“[..] when you join and become part [of the support program], you earn this grant, but you also get an enthusiastic community, people with a diverse knowledge base, a gigantic physical usufructuary space that has no monetary cost or transaction involved. Thus, you have several other resources that you can access besides the grant. That’s why I say that the grant is just one of the [forms of support], you know?” (Mapped organization)

“Financial support is not disconnected from the emancipatory educational work of building autonomy and citizenship.” (Mapped organization)

That makes the financial resources donated a part of a set of offered resources. They are not the only necessary resources. However, they are essential for ensuring that the final decisions are made by those supported, granting autonomy to those directly involved in the problems and solutions the mapped organizations aim to address.

STRENGTHENING AND RECOGNIZING LEADERS, COMMUNITIES AND ORGANIZATIONS

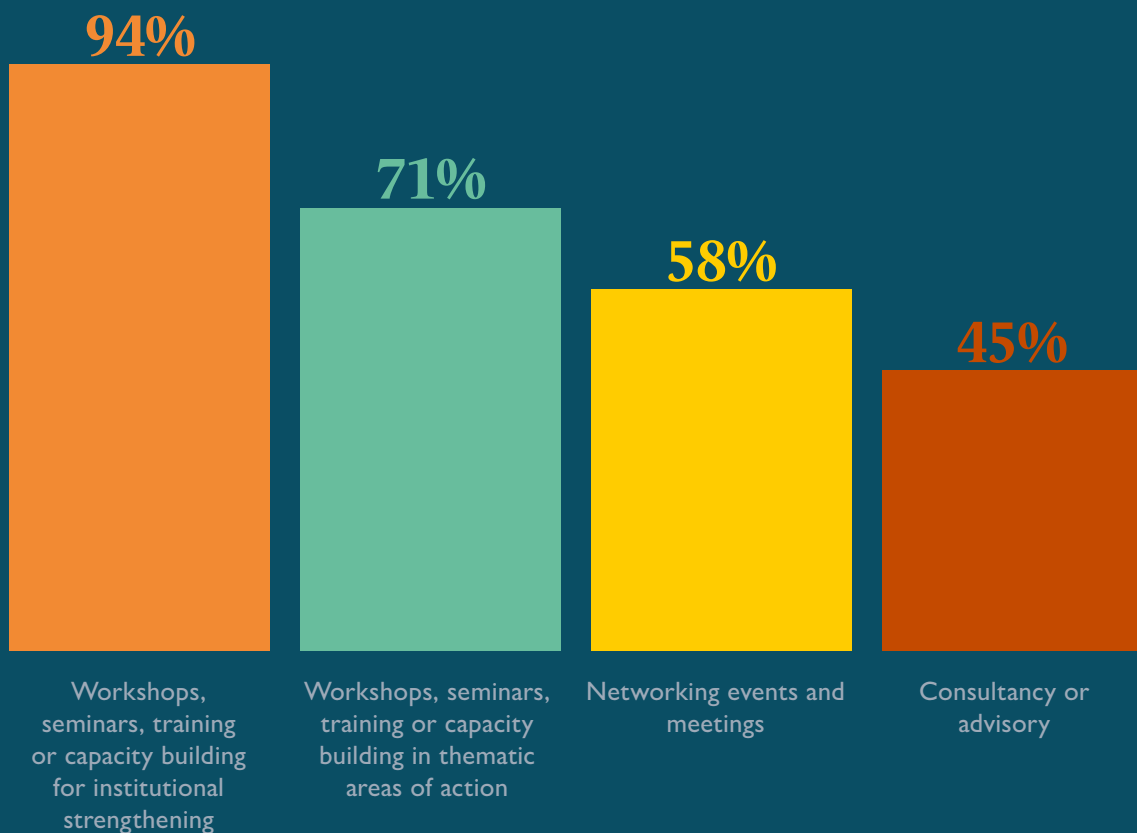
HOW CAN THE STRENGTHENING OF LEADERSHIP, COMMUNITIES AND ORGANIZATIONS BE SUPPORTED?

When asked how they strengthened those they supported, the mapped organizations mentioned non-financial support strategies as part of their process for strengthening the supported leaders, communities and organizations, reinforcing the understanding of the non-financial support approach.



The mapped organizations contribute to strengthening the supported leaders, communities and organizations mainly with workshops, seminars, training and capacity building on administrative and institutional knowledge

Mapped organizations by ways of supporting the strengthening of leaderships, communities and organizations



Base: 31 mapped organizations
Note: Each mapped organization responded to more than 1 option.
The percentages represent the total responses for each option.
Source: Mapping of Independent Grantmaking Organizations for Social Justice and Community Development in Brazil, 2022

HOW DO THE MAPPED ORGANIZATIONS IDENTIFY ORGANIZATIONS, LEADERS AND COMMUNITIES IN THE FIELD OF ACTION?

77%

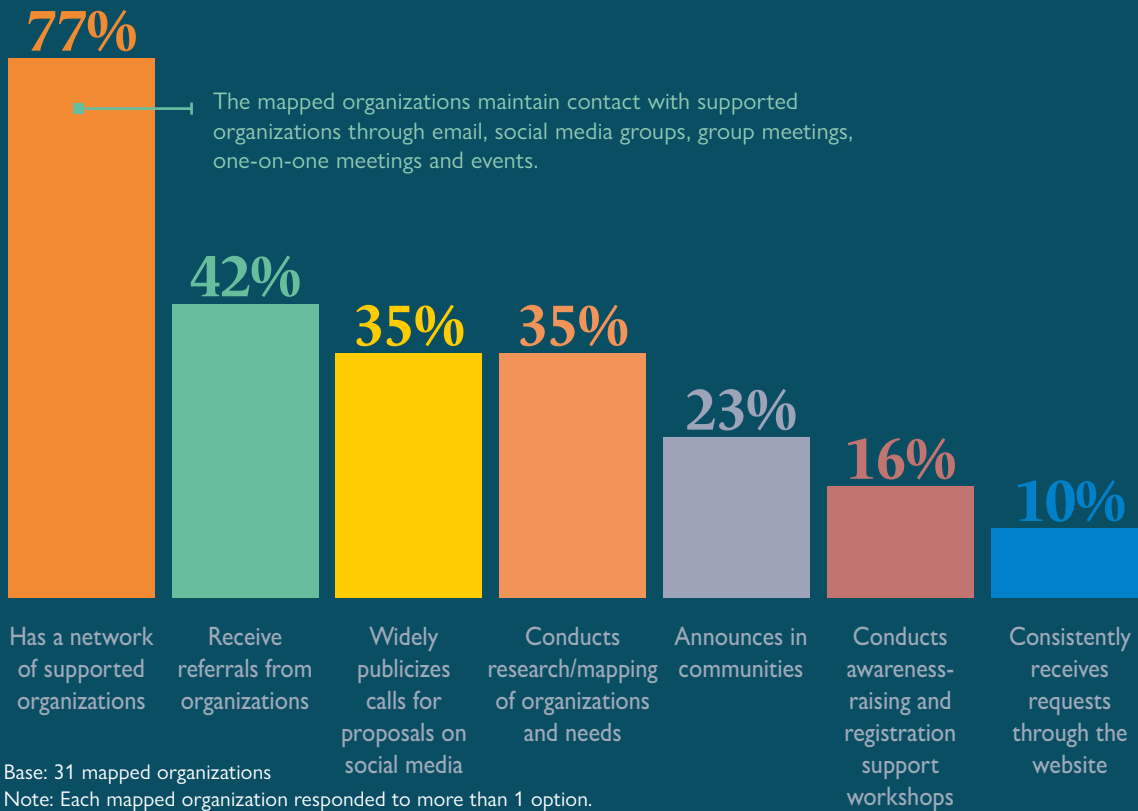
of the mapped organizations keep up to date on leaders, communities and organizations to support through the networks they build while operating

To this end, the organizations indicated that they maintain continuous contact with community leaders and/or organizations, forming a trustworthy network. That makes it possible to see that the organizations generally have a close and up-to-date relationship with the leaders and communities in their field of action.

That relationship allows the mapped organizations to arrange call for proposals and other grantmaking strategies aligned with the current moment, trends, discussions, needs and demands of the organizations and communities they aim to support.

Receiving referrals on organizations to support (42%) is also important. It also signifies the importance of relationships and networks in these situations for the support among independent grantmaking organizations for social justice and community development.

Mapped organizations by ways of identifying leaders, communities and organizations

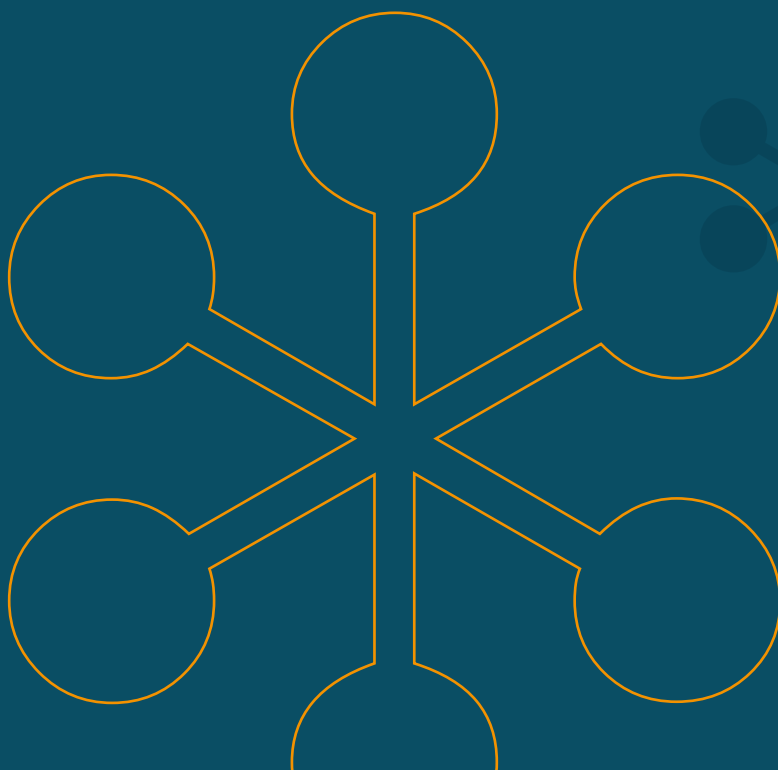


Base: 31 mapped organizations

Note: Each mapped organization responded to more than 1 option.

The percentages represent the total responses for each option.

Source: Mapping of Independent Grantmaking Organizations for Social Justice and Community Development in Brazil, 2022



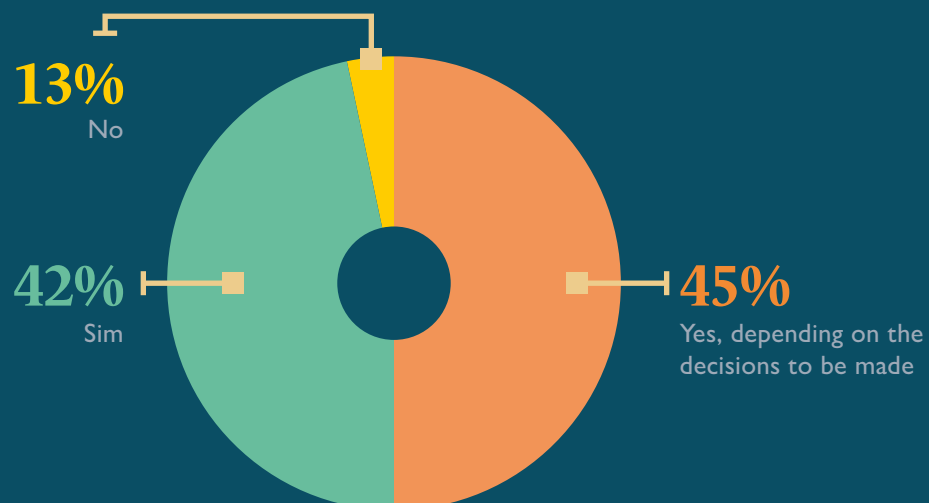
HOW DO GRANTEES PARTICIPATE IN DECISION-MAKING?



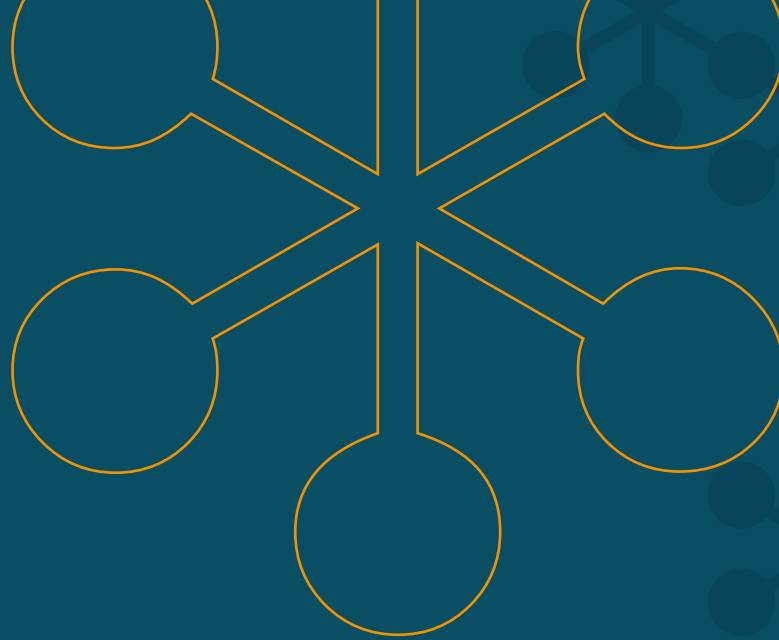
Mapped organizations foster a process of involvement and listening to leaders, communities and supported organizations

As part of the process of maintaining the relationship with the grantees and strengthening the field of action, 87% of the mapped organizations also seek to include the contributions of the supported leaders, communities and organizations in their decision-making processes.

Mapped organizations by the supported leaders', community's and organizations' participation in decision-making

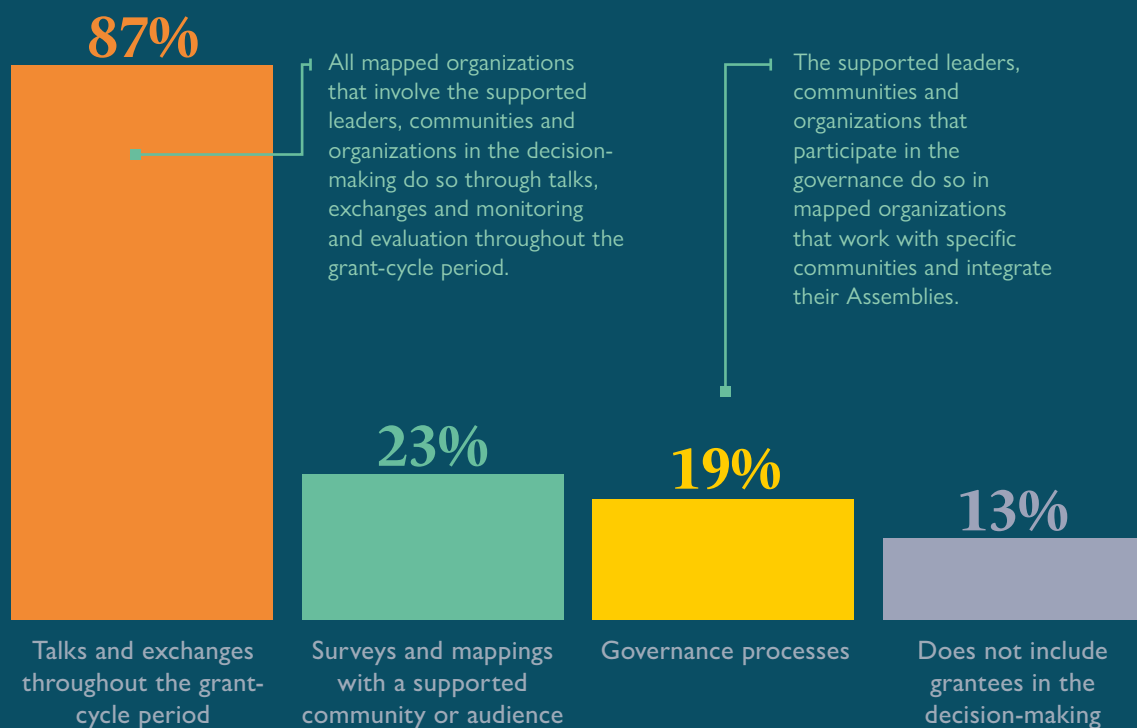


Base: 31 mapped organizations
Note: Chart may not add up to 100% due to rounding.
Source: Mapping of Independent Grantmaking Organizations for Social Justice and Community Development in Brazil, 2022



The grantees mainly participate continuously throughout the grant-cycle processes and are not governed by the mapped organizations.

Mapped organizations by the supported leaders', community's and organizations' forms of participation in decision-making




Base: 31 mapped organizations
Note: Each mapped organization responded to more than 1 option.
The percentages represent the total responses for each option.
Source: Mapping of Independent Grantmaking Organizations for Social Justice and Community Development in Brazil, 2022



ARTICULATING AND STRENGTHENING THE FIELD

HOW DO MAPPED
ORGANIZATIONS CONTRIBUTE TO
BUILDING KNOWLEDGE ABOUT
THEIR FIELD OF ACTION?



The mapped organizations
are very engaged in the
knowledge production
about their field of action



94% *of the organizations produce content aimed at building knowledge in their field of action*

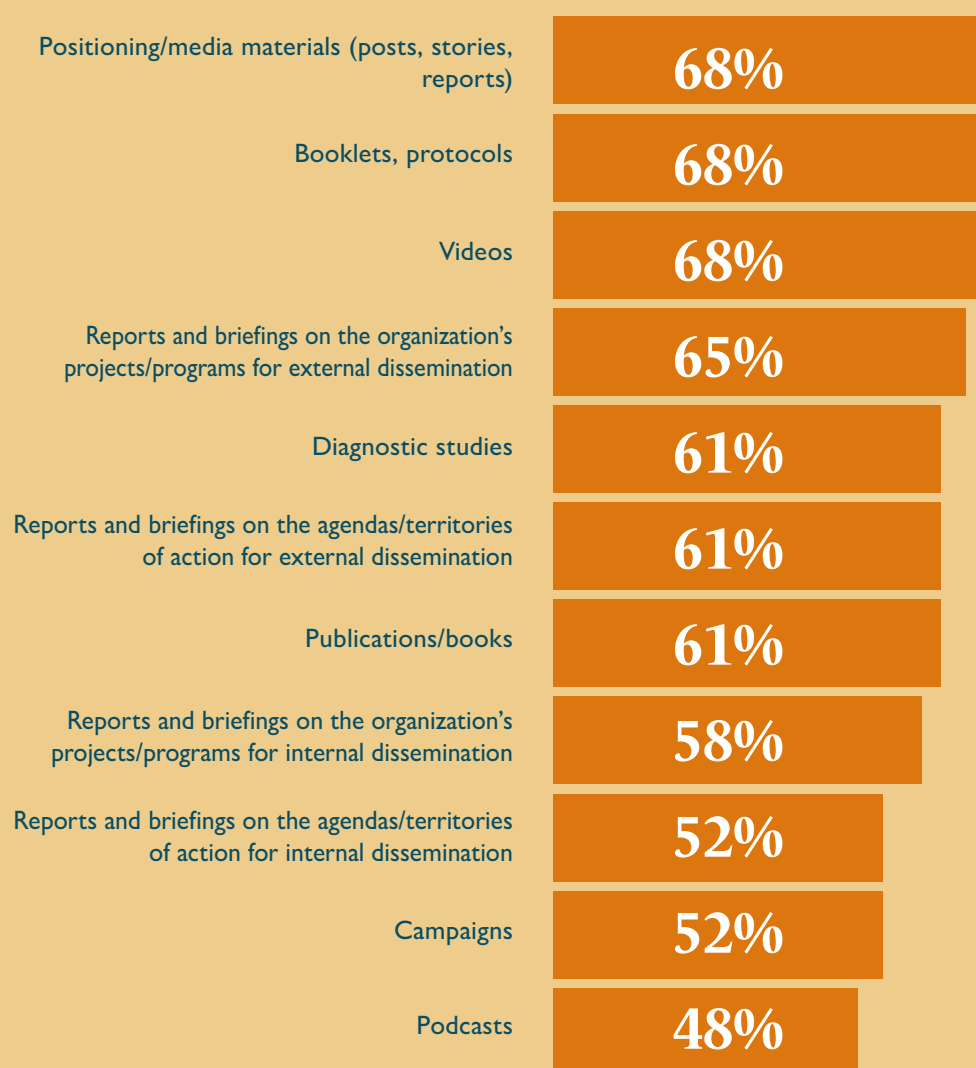
The organizations that responded that they do not produce anything are starting the process of participate in building knowledge in their fields of action.

The mapped organizations produce knowledge in many diverse methods, from more objective formats focused on social media to more descriptive and analytical formats, such as publications, books and diagnostics. Reports and briefings on projects and programs are also important for producing and disseminating knowledge.

The mapped organizations do not separate the production of knowledge for the field from the processes of donation of financial and non-financial resources and from the exchanges and collective constructions with the supported leaders, communities and organizations.

The information produced in grantmaking processes is used for publications and other content for external and internal dissemination. Organizations that work with traditional communities also speak of fostering joint dissemination of knowledge in the communities.

Mapped organizations by ways of building knowledge about the field of action



Base: 31 mapped organizations

Note: Each mapped organization responded to more than 1 option.

The percentages represent the total responses for each option.

Source: Mapping of Independent Grantmaking Organizations for Social Justice and Community Development in Brazil, 2022

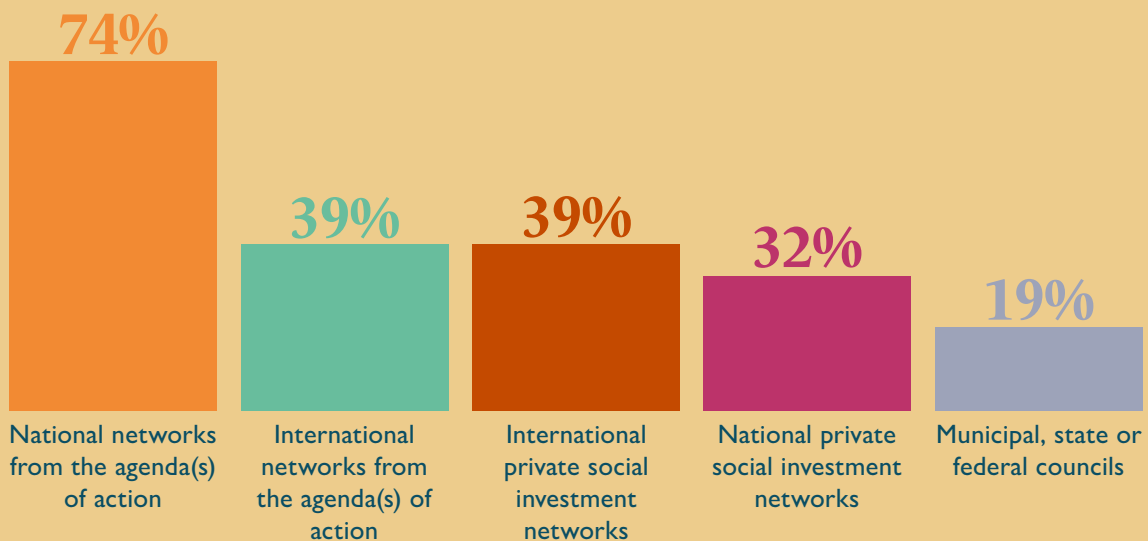
WHICH THEMATIC NETWORKS DO THE MAPPED ORGANIZATIONS PARTICIPATE IN?

87%

of organizations participate in thematic networks in the field of private social investment or connected to their areas of action

The organizations are mostly part of national networks from their topics of action, international networks and private social investment.

Mapped organizations by participation in thematic networks



Base: 31 mapped organizations

Note: Each mapped organization responded to more than 1 option. The percentages represent the total responses for each option.

Source: Mapping of Independent-Donor Organizations for Social Justice and Community Development in Brazil, 2022

The Brazilian Philanthropy Network for Social Justice (RFJS) is the national network on the topic of action most cited by the mapped organizations (45%). While the Institute for the Development of Social Investment (IDIS, in Portuguese, for *Instituto para o Desenvolvimento do Investimento Social*) and the Group of Institutions, Foundations and Companies (GIFE, in Portuguese, for *Grupo de Instituições, Fundações e Empresas*) are the most cited national social investment networks, totaling 13% and 10%, respectively.

ORGANIZATIONS INCLUDED IN THIS MAPPING

ORGANIZATIONS FROM THE BRAZILIAN PHILANTHROPY NETWORK FOR SOCIAL JUSTICE

Baobá - Fundo Para Equidade Racial

Casa Fluminense

ELAS+ Doar para Transformar

Fundação Fundo Brasil de Direitos Humanos

Fundo Brasileiro de Educação Ambiental (FunBEA)

Fundo Casa Socioambiental

Fundo Positivo

Instituto Clima e Sociedade (iCS)

Instituto Comunitário Baixada Maranhense

Instituto Comunitário Grande Florianópolis (ICOM)

Instituto Procomum

Instituto Sociedade População e Natureza (ISPN)

Redes da Maré

Taboa Fortalecimento Comunitário

MAPPED ORGANIZATIONS

Associação das Comunidades Remanescentes de Quilombos do Município de Oriximiná (ARQMO) - Fundo Quilombola

Associação de Profissionais do Audiovisual Negro (APAN) - Fundo de Amparo a Profissionais do Audiovisual Negro (FAPAN)

Associação Endowment Sempre FEA

Associação Nossa Cidade - Fundo Regenerativo Brumadinho

BrazilFoundation*

Coordenadoria Ecumênica de Serviço (CESE)

Federação das Fundações e Associações do Espírito Santo (Fundaes)

Federação das Organizações Indígenas do Rio Negro (FOIRN) - Fundo Indígena do Rio Negro (FIRN)

Federação de Órgãos para Assistência Social e Educacional (FASE) - Fundo Saap

Fundo Agbara*

Fundo Dema - Federação de Órgãos para Assistência Social e Educacional (FASE)

Fundo Iratapuru

Instituto Juruti Sustentável (IJUS) - Fundo JURUTI Sustentável (FUNJUS)

Manauara Associação Comunitária

Movimento Interestadual das Quebradeiras de Coco Babaçu (MIQCB) - Fundo Babaçu

PODÁALI - Fundo Indígena Da Amazônia Brasileira

Silo - Arte e Latitude Rural

* The organization was not a member of the Brazilian Network at the time of the mapping.

GENERAL COORDINATION

Graciela Hopstein

RESEARCH AND DATA

Milena Peres

Jonathas Azevedo

TECHNICAL WRITING AND EDITING

ponteAponte

Fabiana Sousa

Graziela Santiago

Nathalia Gonçalves

TRANSLATION

Melissa Harkin

GRAPHIC DESIGN AND LAYOUT

Ara Comunicação

ISBN: 978-65-995113-6-3

All material in this publication is licensed under Creative Commons CCBT 4.0. It may be reproduced without prior authorization from the Rede de Filantropia para a Justiça Social, provided that the original source is cited, including the author of the text or photo, when applicable. Derivative works must also be licensed in CCBT 4.0.

SUPPORTING PARTNERS



PRODUCED BY



TECHNICAL WRITING AND EDITING

